

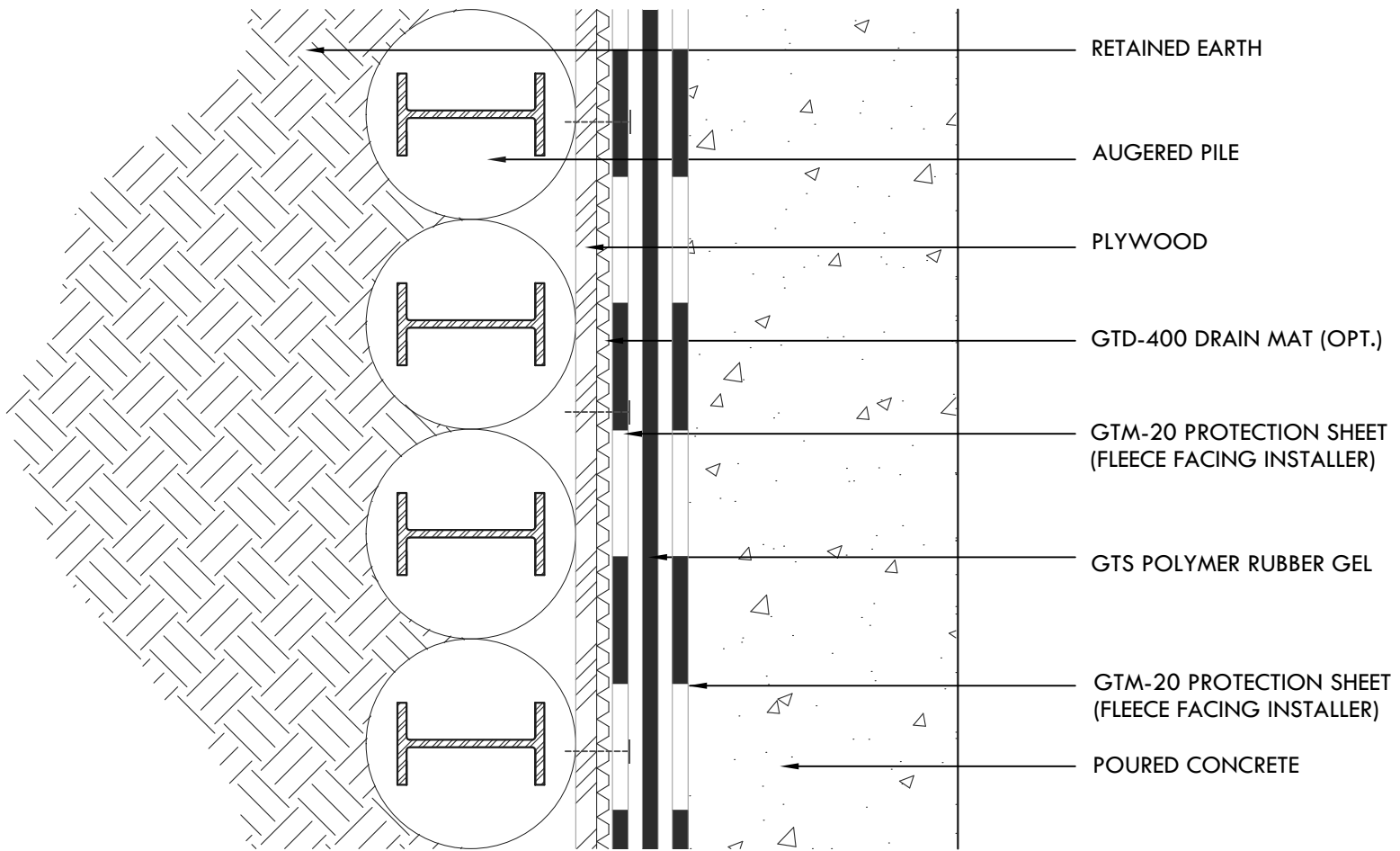
NOTE: ALL GTM PROTECTION SHEET SEAMS MUST BE TAPED.



1136 114th LN NW
MINNEAPOLIS
MN 55448
OFFICE: 612.872.1900
www.re-systemsgroup.com

WOOD LAGGING WITH STEEL PILES

DATE:	10.27.23
SCALE:	NTS
DRAWING NO.:	GTS-500-BS 01



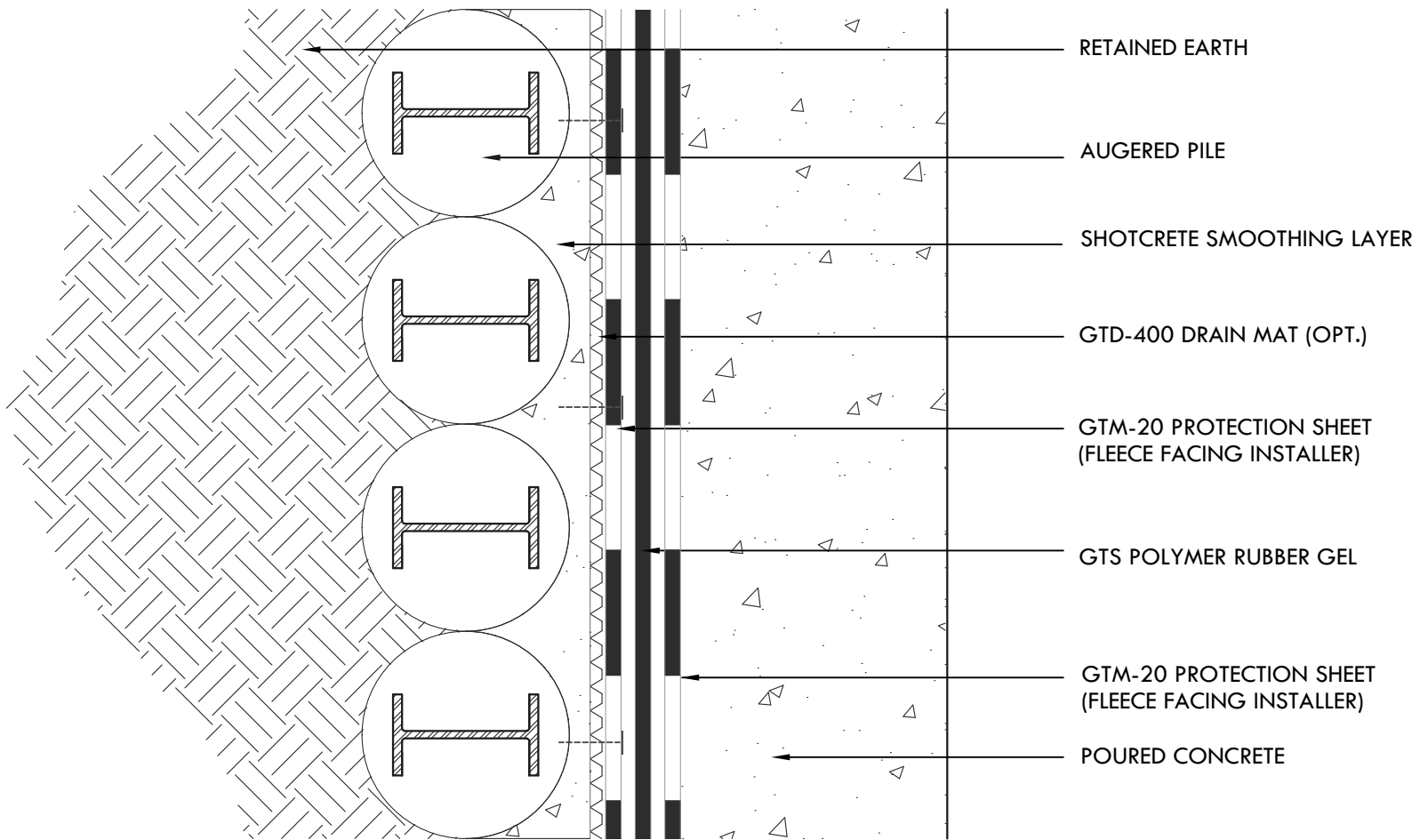
NOTE: ALL GTM PROTECTION SHEET SEAMS MUST BE TAPED.



1136 114th LN NW
MINNEAPOLIS
MN 55448
OFFICE: 612.872.1900
www.re-systemsgroup.com

AUGERED CAISSON WITH PLYWOOD

DATE:	10.27.23
SCALE:	NTS
DRAWING NO.:	GTS-500-BS 02



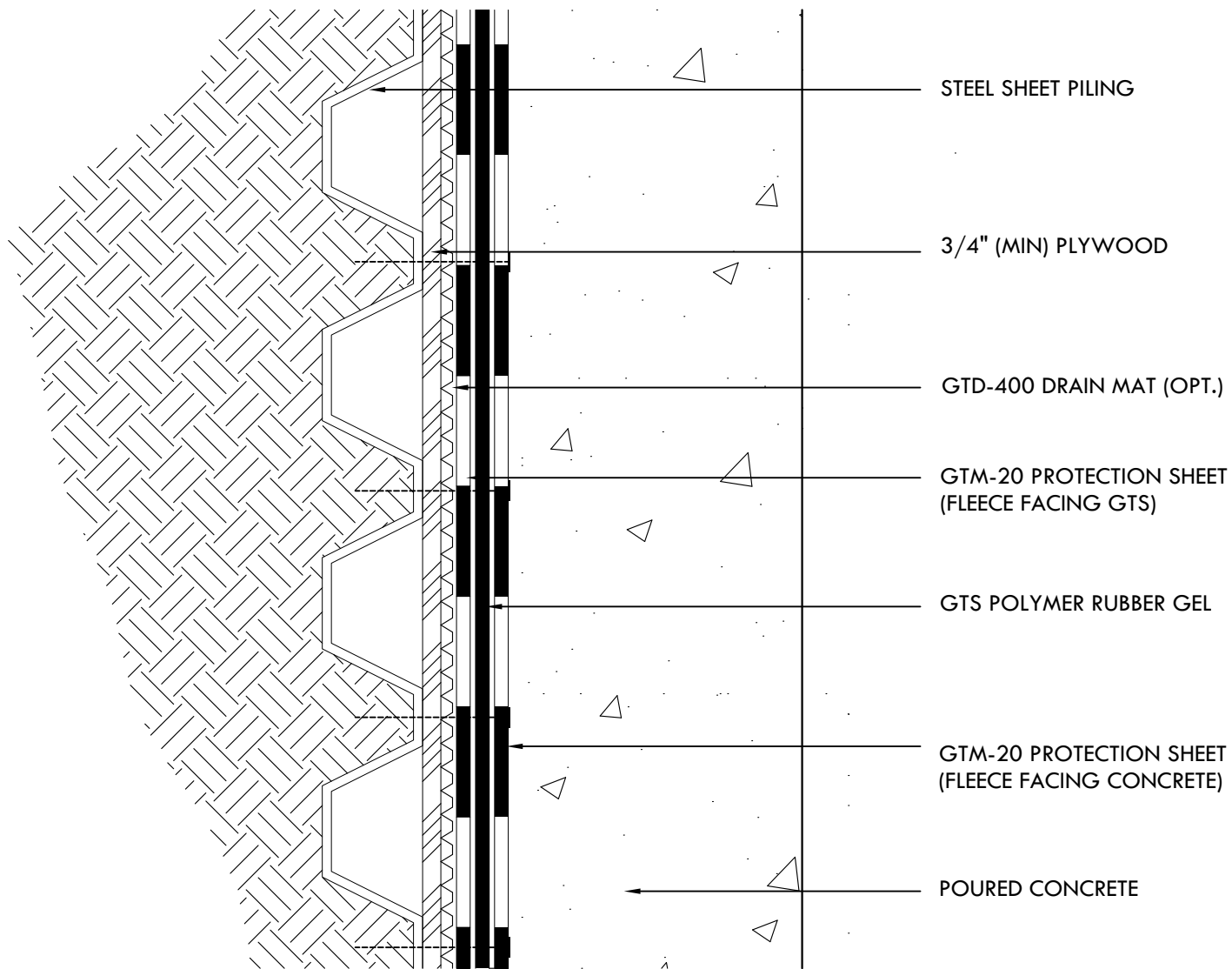
NOTE: ALL GTM PROTECTION SHEET SEAMS MUST BE TAPED.



1136 114th LN NW
MINNEAPOLIS
MN 55448
OFFICE: 612.872.1900
www.re-systemsgroup.com

AUGERED CAISSON WITH SHOTCRETE

DATE:	10.27.23
SCALE:	NTS
DRAWING NO.:	GTS-500-BS 03



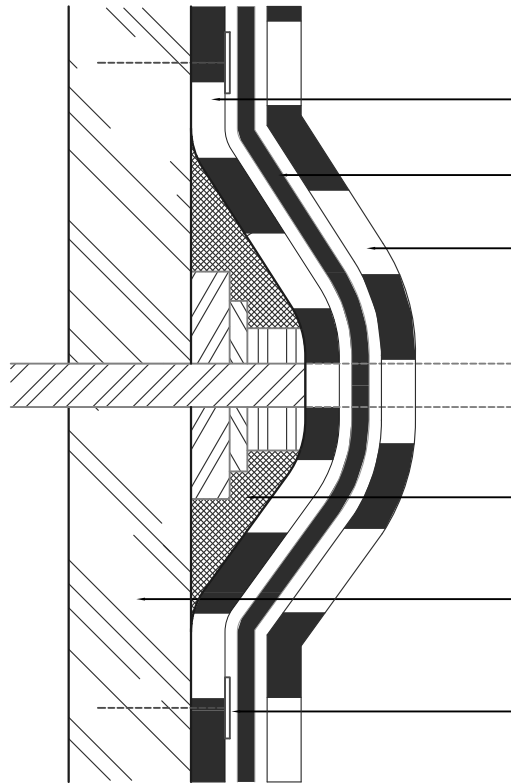
NOTE: ALL GTM PROTECTION SHEET SEAMS MUST BE TAPED.



1136 114th LN NW
MINNEAPOLIS
MN 55448
OFFICE: 612.872.1900
www.re-systemsgroup.com

STEEL SHEET PILING

DATE:	10.27.23
SCALE:	NTS
DRAWING NO.:	GTS-500-BS 04



GTM-20 PROTECTION SHEET
(FLEECE FACING INSTALLER)

GTS POLYMER RUBBER GEL

GTM-20 PROTECTION SHEET
(FLEECE FACING INSTALLER)

GTS POLYMER RUBBER GEL

WOOD LAGGING

NAIL TO PLYWOOD AT 12" O.C.
(MECHANICALLY FASTEN TO SECURE TIGHT FIT)

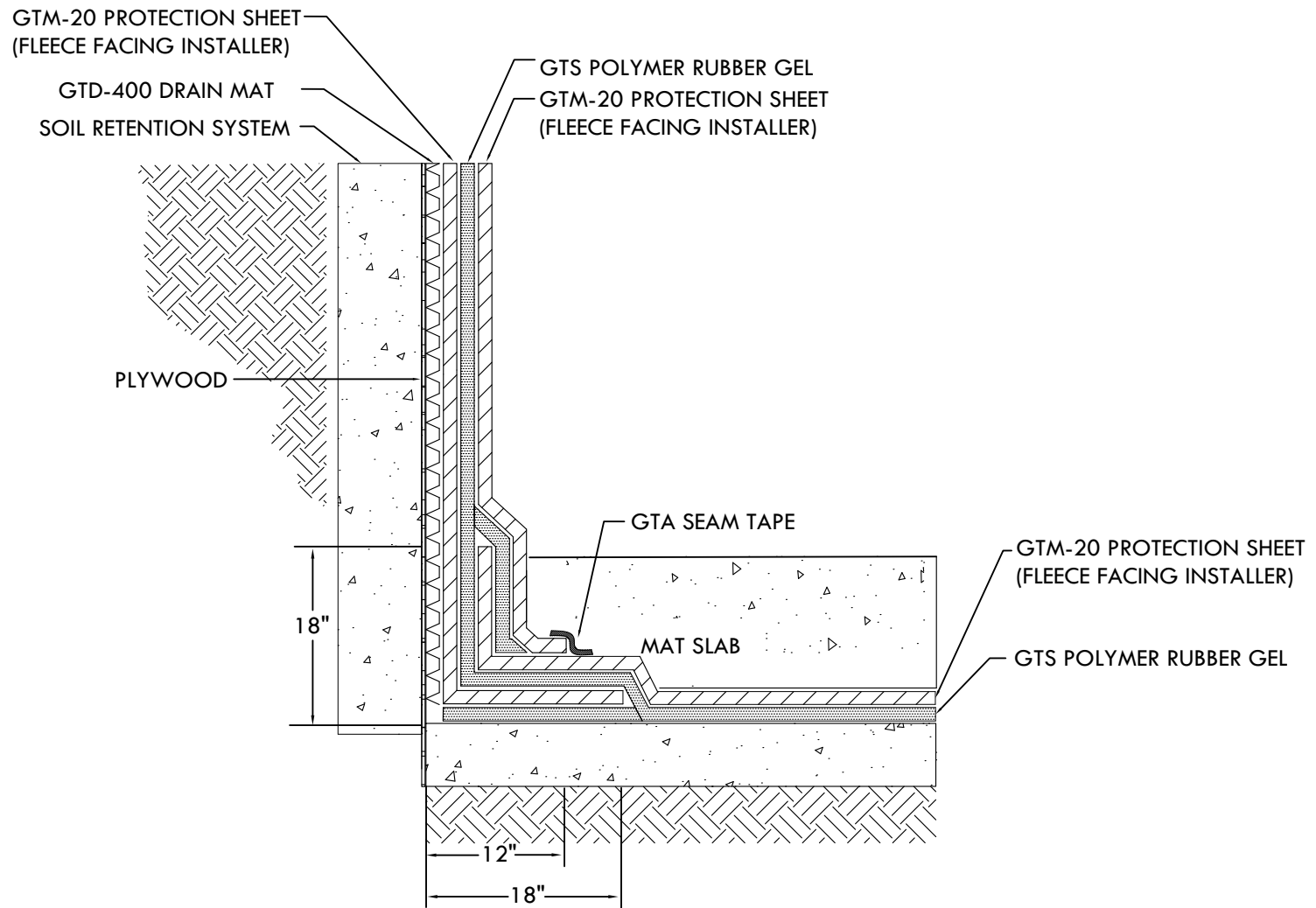
NOTE: ALL GTM PROTECTION SHEET SEAMS MUST BE TAPED.



1136 114th LN NW
MINNEAPOLIS
MN 55448
OFFICE: 612.872.1900
www.re-systemsgroup.com

INSTALLATION OVER LAGGING TIES

DATE :	10.27.23
SCALE :	NTS
DRAWING NO. :	GTS-500-BS 05



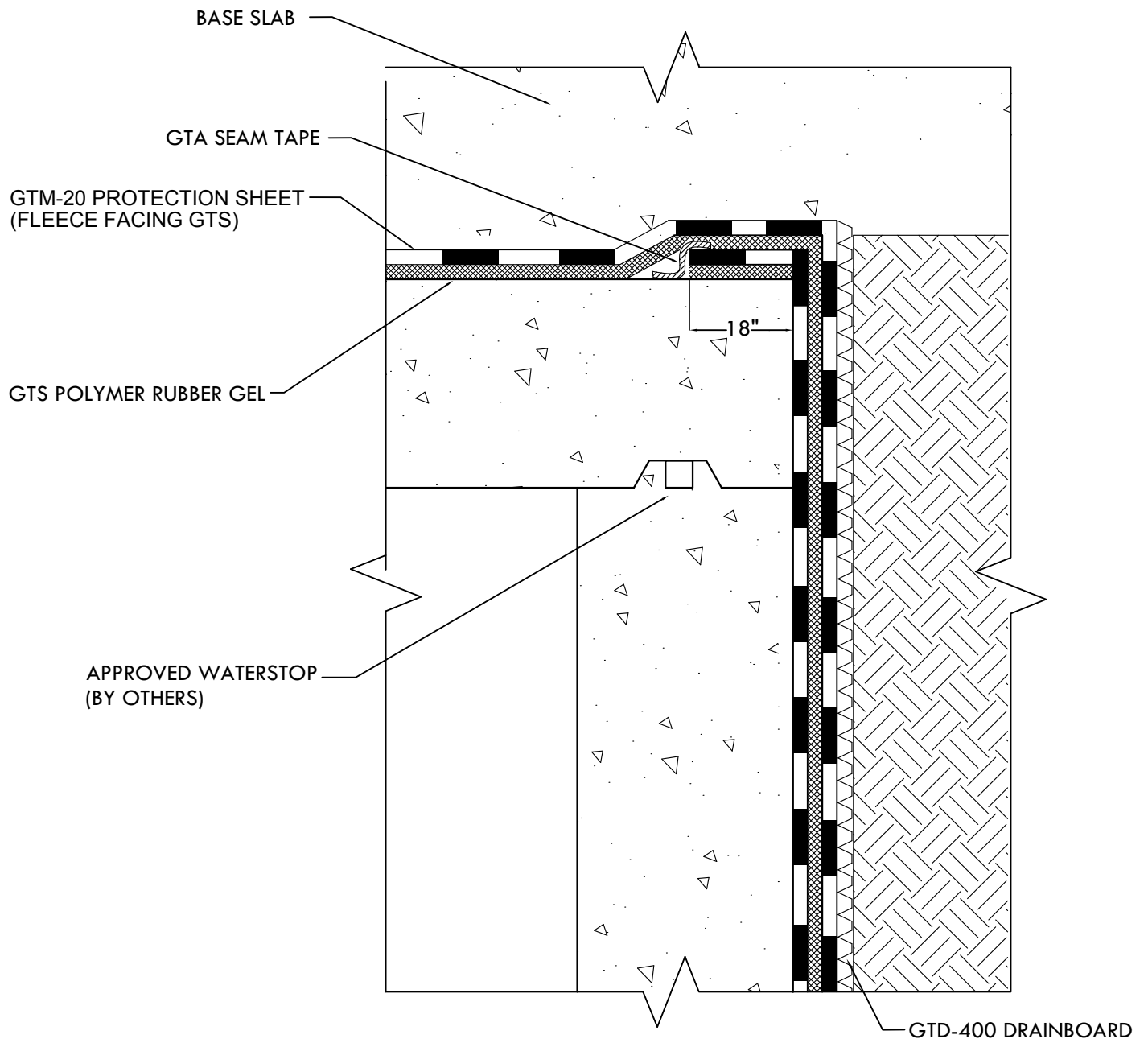
NOTE: ALL GTM PROTECTION SHEET SEAMS MUST BE TAPED.



1136 114th LN NW
MINNEAPOLIS
MN 55448
OFFICE: 612.872.1900
www.re-systemsgroup.com

BLIND SIDE WALL TO
POSITIVE SIDE FLOOR TRANSITION

DATE:	10.27.23
SCALE:	NTS
DRAWING NO.:	GTS-500-BS 06



NOTE: ALL GTM PROTECTION SHEET SEAMS MUST BE TAPED.

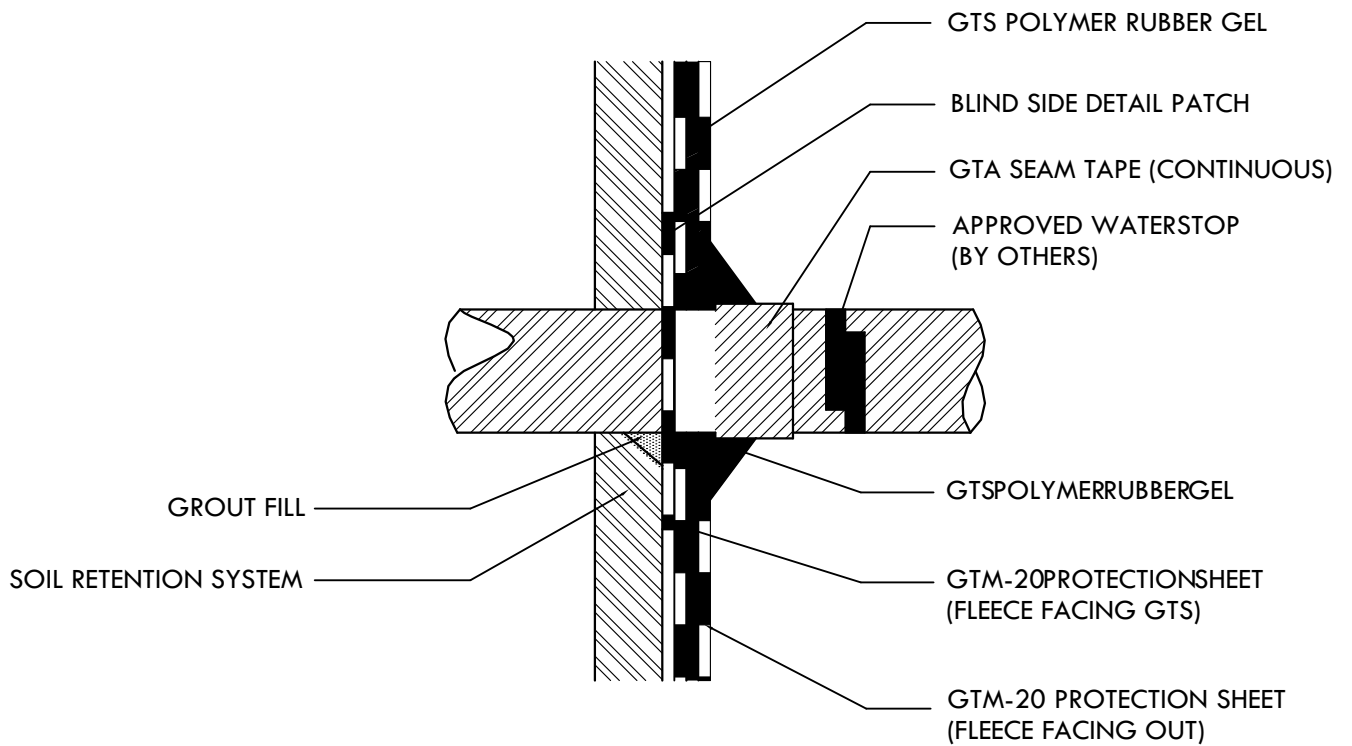
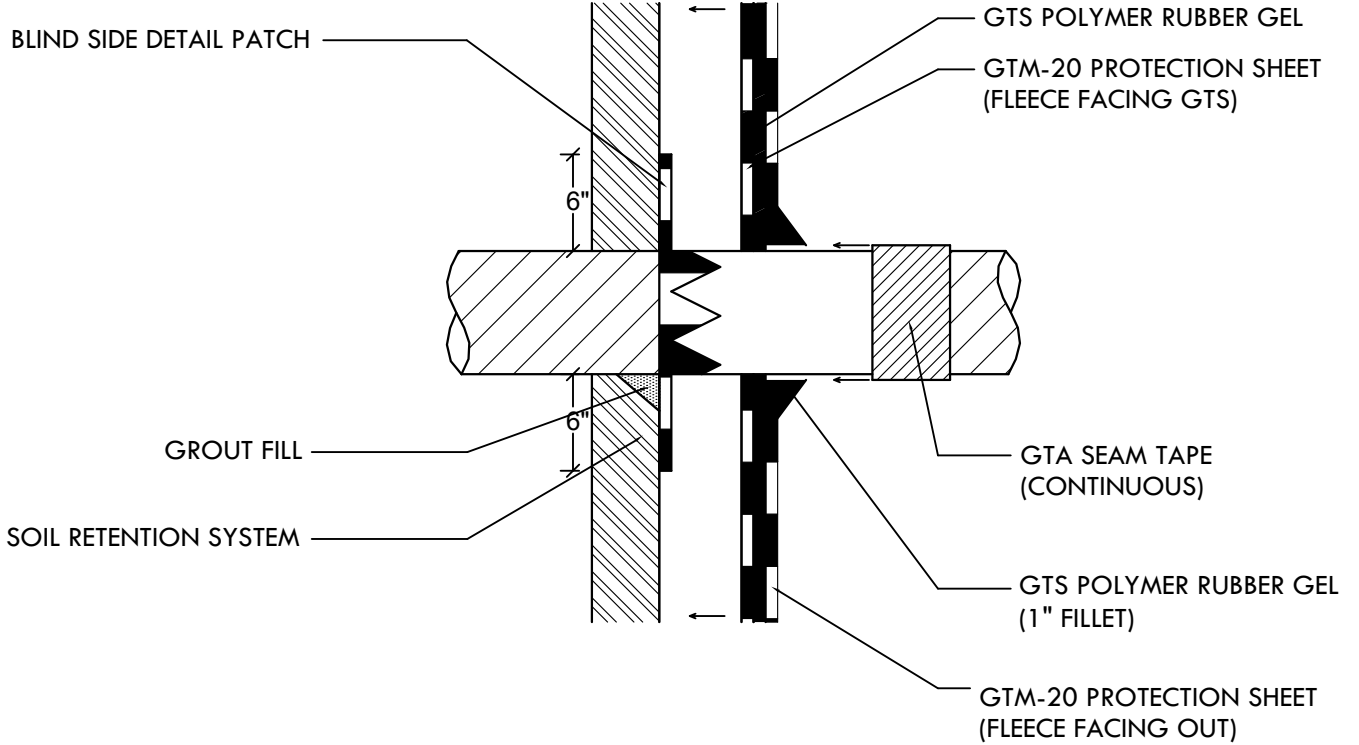


1136 114th LN NW
 MINNEAPOLIS
 MN 55448
 OFFICE: 612. 872. 1900
 www.re-systemsgroup.com

**BLIND SIDE VERTICAL WALL
 TO ROOF TRANSITION**

DATE: 10.27.23
 SCALE: NTS
 DRAWING NO.: GTS-500-BS 07

ASSEMBLY



FINISHED

NOTE: ALL GTM PROTECTION SHEET SEAMS MUST BE TAPED.



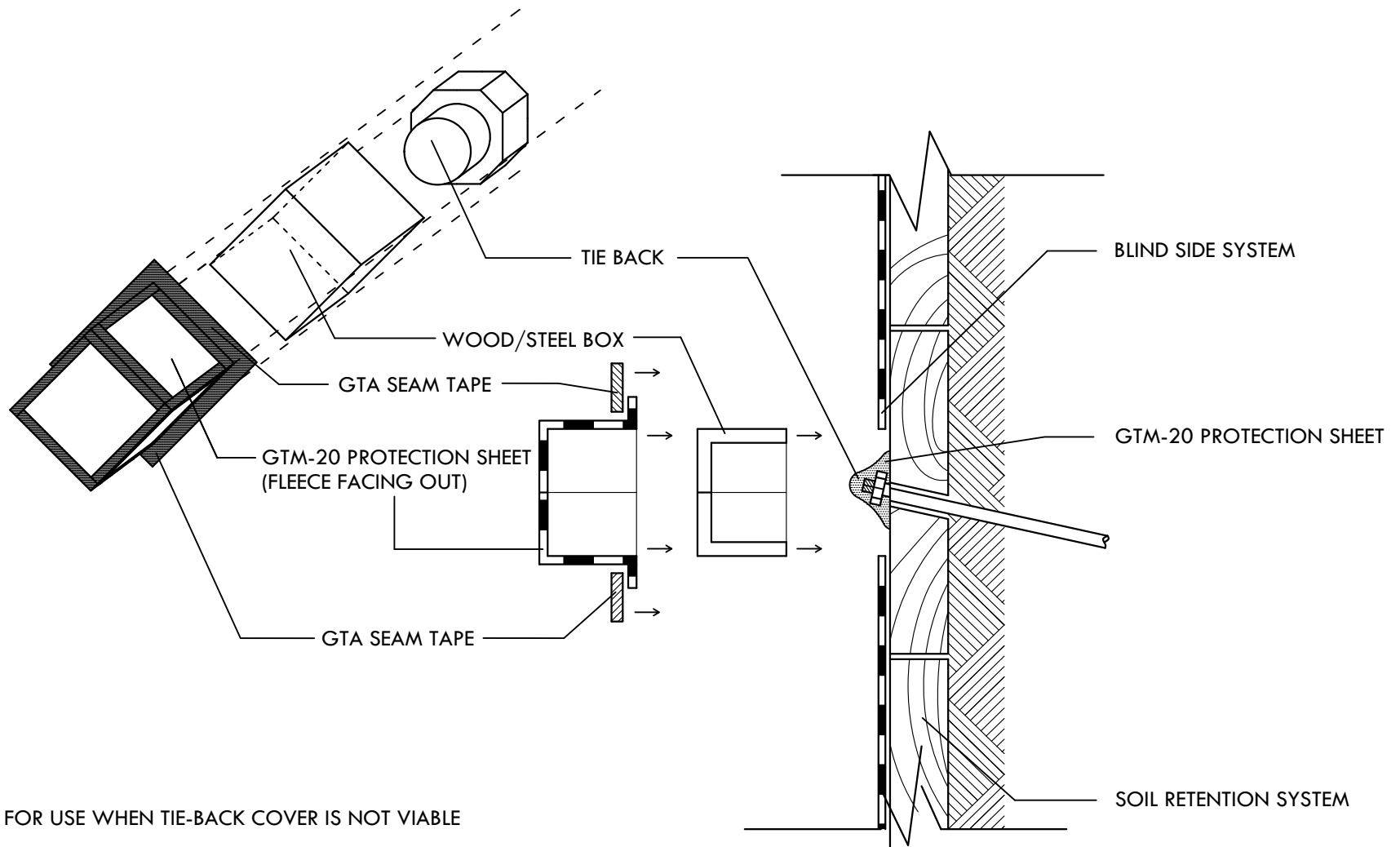
1136 114th LN NW
MINNEAPOLIS
MN 55448
OFFICE: 612.872.1900
www.re-systemsgroup.com

TYPICAL BLINDSIDE PENETRATIONS

DATE: 10.27.23

SCALE: NTS

DRAWING NO.: GTS-500-BS 08



NOTE: FOR USE WHEN TIE-BACK COVER IS NOT VIABLE

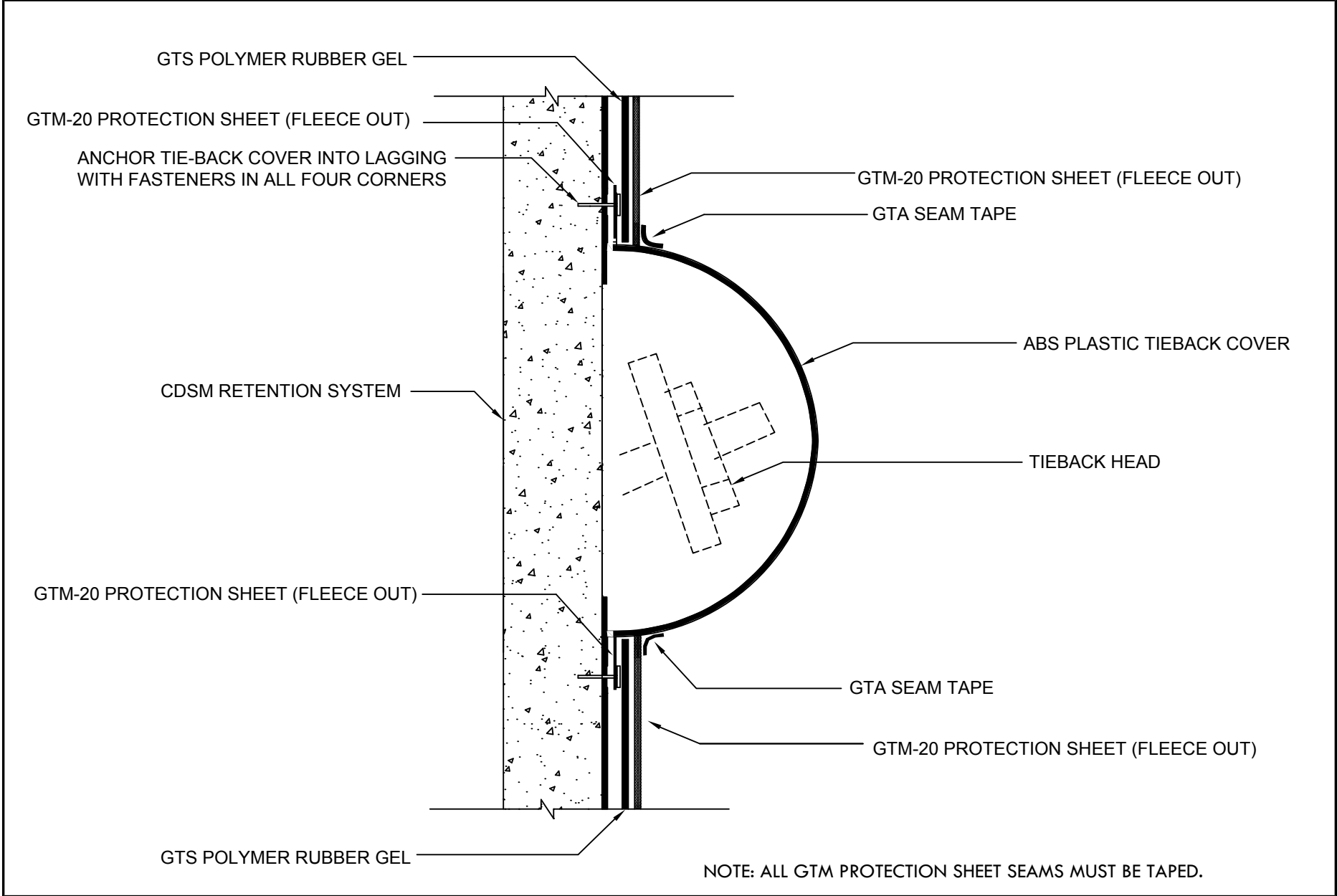
1. APPLY GTS POLYMER RUBBER GEL INSIDE BOX
2. WRAP GTM-20 PROTECTION SHEET AROUND BOX
3. APPLY TO BLIND SIDE SYSTEM
4. ALL GTM PROTECTION SHEET SEAMS MUST BE TAPED.



1136 114th LN NW
MINNEAPOLIS
MN 55448
OFFICE: 612.872.1900
www.re-systemsgroup.com

TIEBACK BOX DETAIL

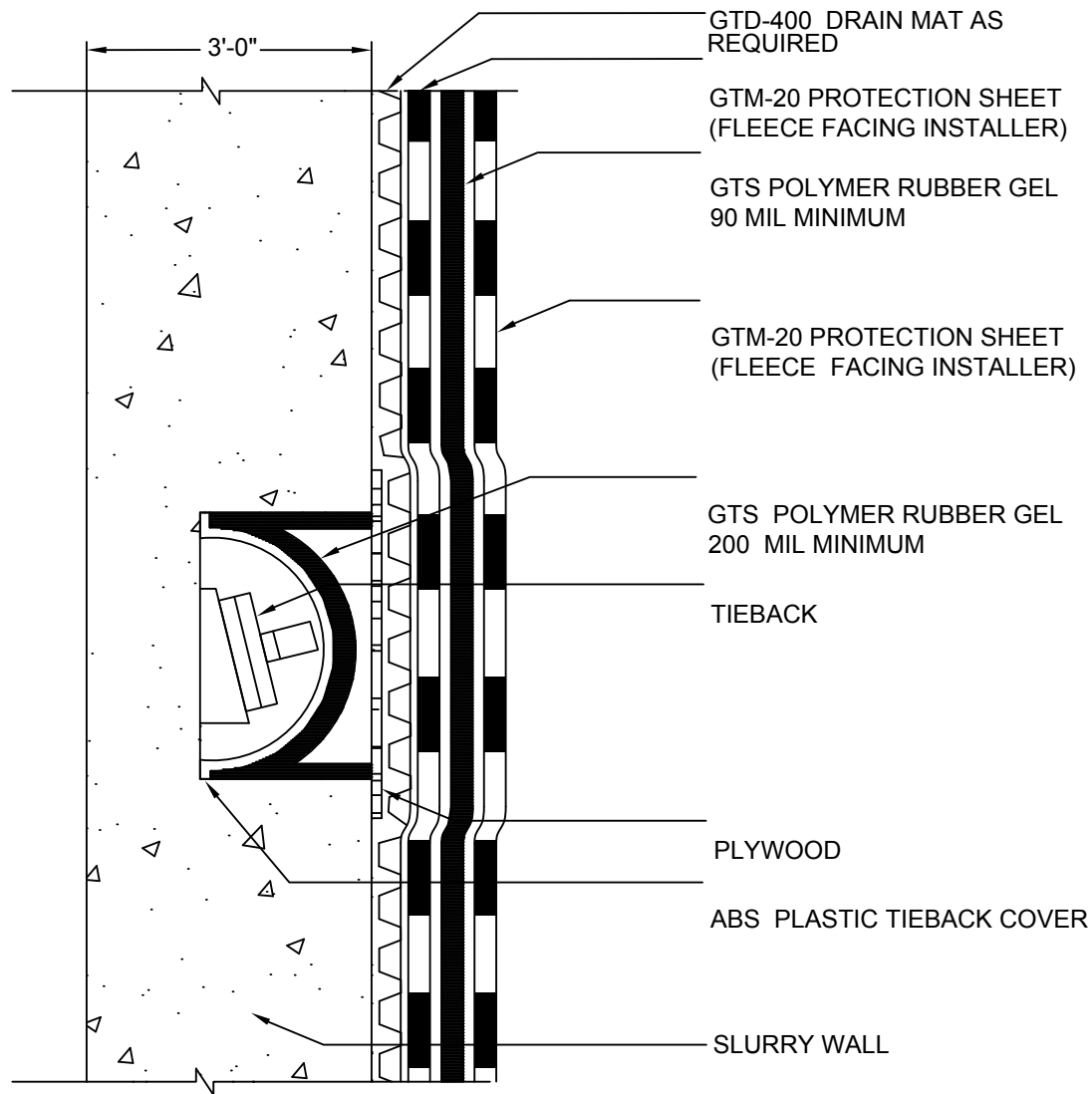
DATE:	10.27.23
SCALE:	NTS
DRAWING NO.:	GTS-500-BS 09



1136 114th LN NW
 MINNEAPOLIS
 MN 55448
 OFFICE: 612.872.1900
 www.re-systemsgroup.com

TIEBACK COVER

DATE:	10.27.23
SCALE:	NTS
DRAWING NO.:	GTS-500-BS-10



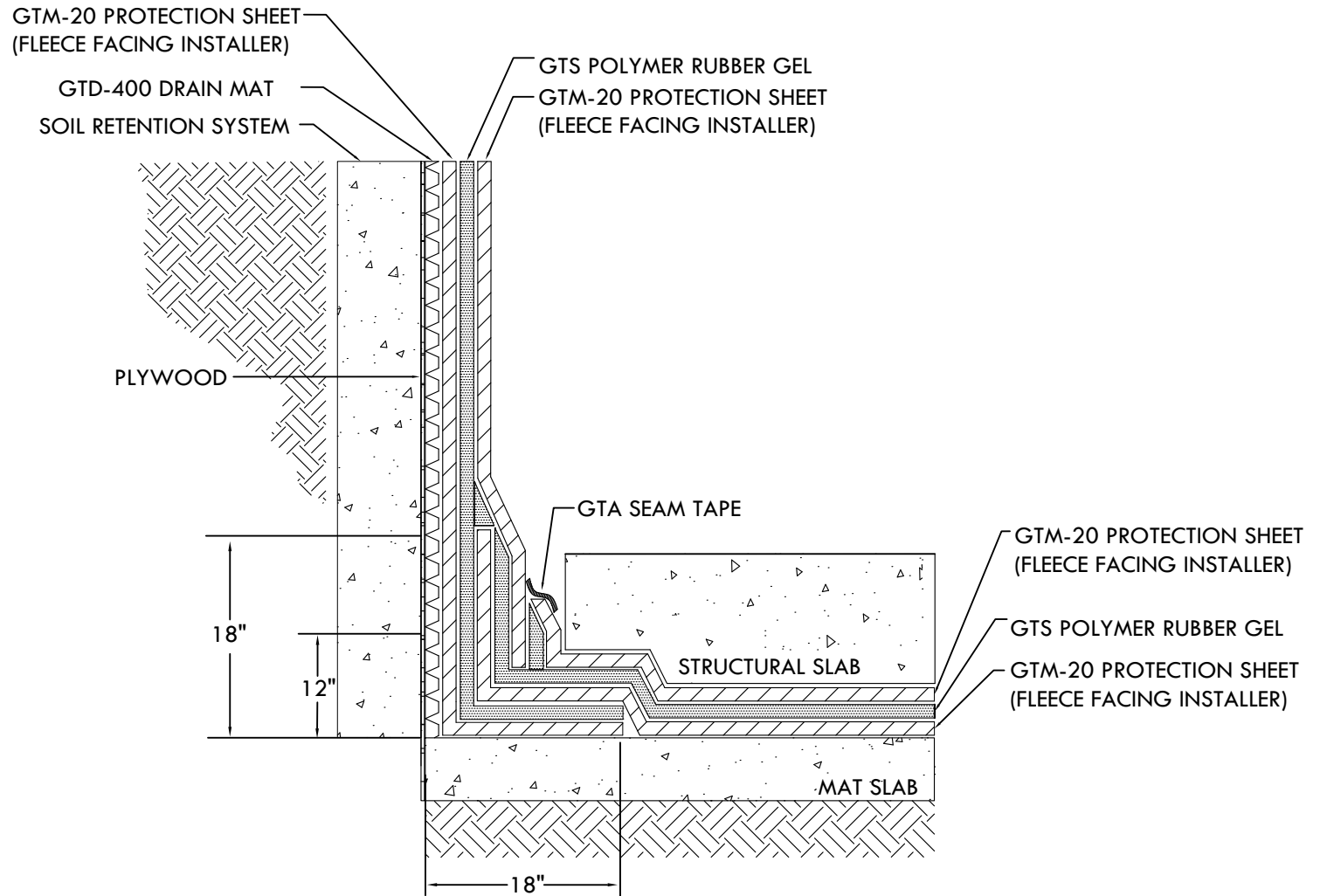
NOTE: ALL GTM PROTECTION SHEET SEAMS MUST BE TAPED.



1136 114th LN NW
MINNEAPOLIS
MN 55448
OFFICE: 612.872.1900
www.re-systemsgroup.com

RECESSED TIEBACK ON A SLURRY WALL

DATE:	10.27.23
SCALE:	NTS
DRAWING NO.:	GTS-500-BS-11



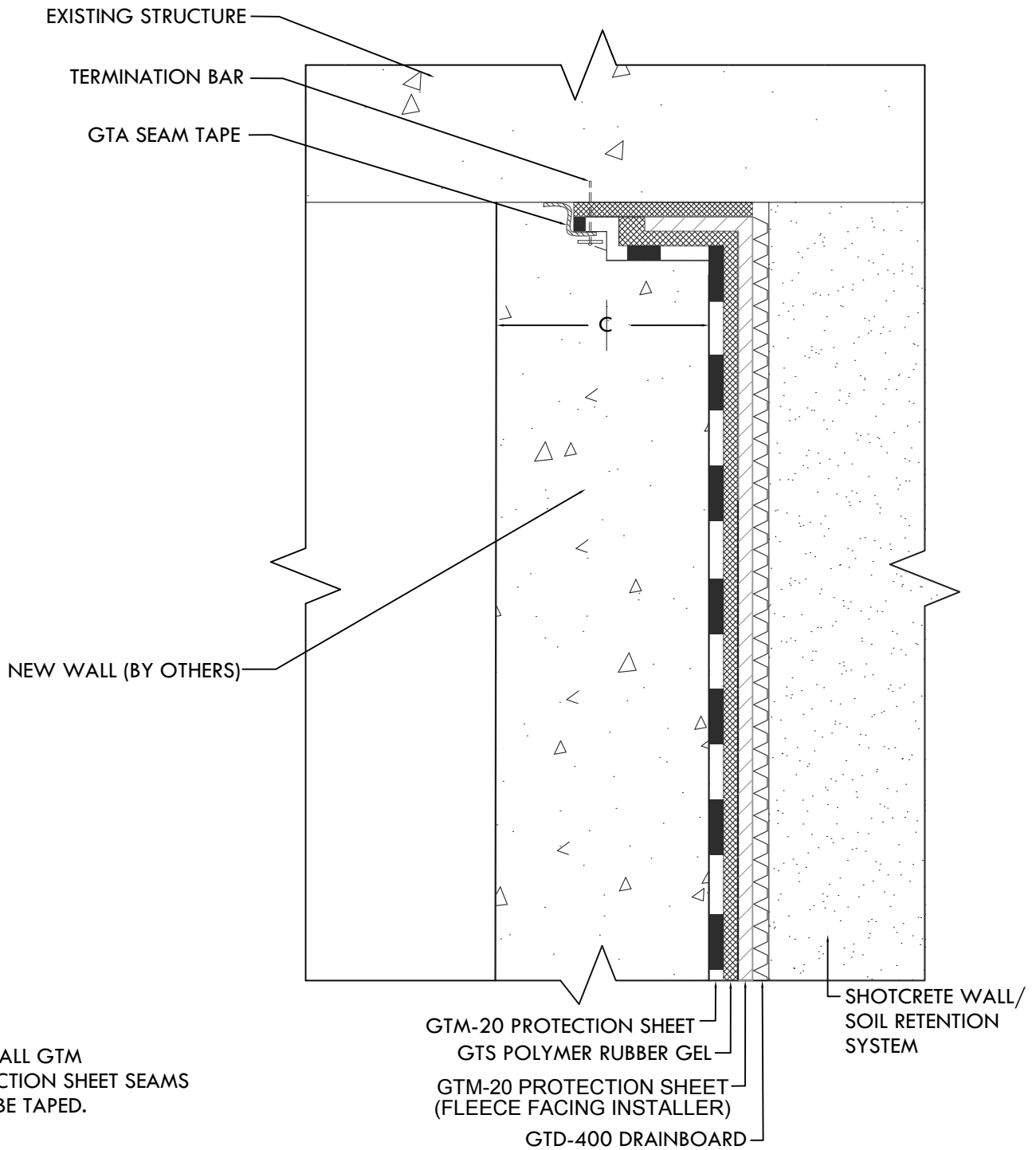
NOTE: ALL GTM PROTECTION SHEET SEAMS MUST BE TAPED.



1136 114th LN NW
MINNEAPOLIS
MN 55448
OFFICE: 612.872.1900
www.re-systemsgroup.com

BLIND SIDE WALL TO
BLIND SIDE FLOOR TRANSITION

DATE:	10.27.23
SCALE:	NTS
DRAWING NO.:	GTS-500-BS 12



1136 114th LN NW
MINNEAPOLIS
MN 55448
OFFICE: 612.872.1900
www.re-systemsgroup.com

**BLIND SIDE TERMINATION
TO EXISTING STRUCTURE**

DATE: 10.27.23
SCALE: NTS
DRAWING NO.: GTS-500-BS 13