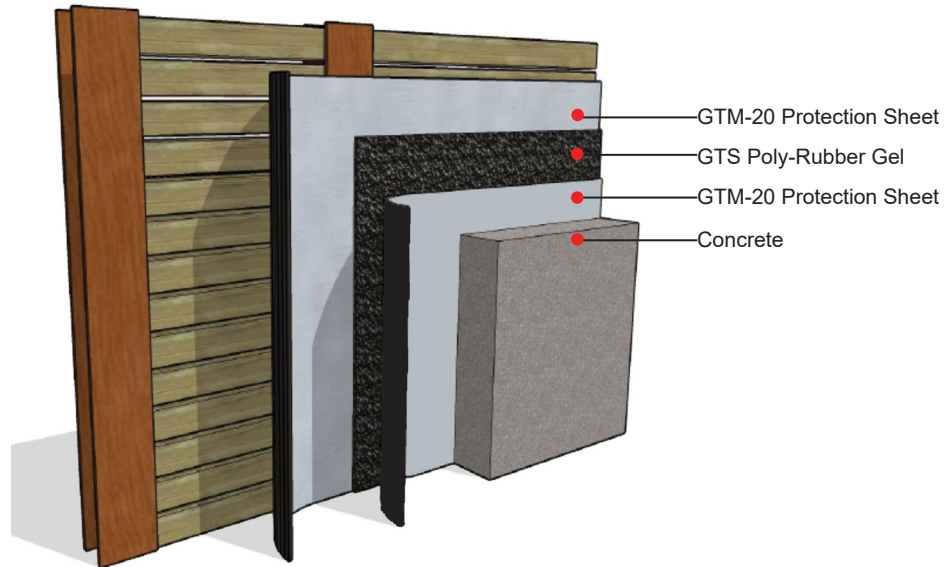


**GTS Poly-Rubber Gel + Dual Layer of GTM-20 Protection**



	Features	Benefits
<b>Triple Layer Protection</b>	Composite waterproofing system combines two layers of highly durable GTM Protection Sheets with responsive GTS Poly-Rubber Gel.	Combination of GTS Poly-Rubber Gel and GTM Protection Sheets creates an exceptionally durable, dynamically responsive, high-performance waterproofing system.
<b>Fully Adhered, Monolithic Gel Membrane</b>	GTS Poly-Rubber Gel component creates a monolithic, fully adhered, seamless bond to the substrate.	No seams; no path for water migration throughout the membrane.
<b>Durable</b>	Robust GTM-20 Protection Sheets are exceptionally chemical, hydrocarbon and, methane resistant. GTM-20 Protection Sheets are highly puncture-resistant and exhibit high tensile strength.	Effective in many adverse soil environments and conditions.
<b>Non-Curing Gel</b>	GTS Poly-Rubber Gel remains a flexible gel. Responsive to continuous substrate movement and self-healing under hydrostatic pressure.	Waterproofing integrity is maintained without loss of adhesion to substrate or failure from membrane punctures.
<b>Minimal Surface Prep</b>	Applies to green concrete and difficult bonding substrates. No primer or surface conditioner necessary.	Ease and effectiveness of application. Better productivity.
<b>Easy to Apply</b>	GTS Poly-Rubber Gel is easily applied by spraying or troweling material between two GTM-Protection Sheets. Easy to apply in many environmental conditions.	Cost-effective application reduces labor costs, speeds time to project completion and reduces mistakes in application.
<b>Environmentally Responsible</b>	GTS Poly-Rubber Gel is over 20% post consumer recycled content. High solids content, <1% VOC - California VOC compliant.	Contributes to project sustainability and to the USGBC's LEED certification.
<b>Warranty</b>	Warranty available.	Peace of mind. Long term effectiveness.

