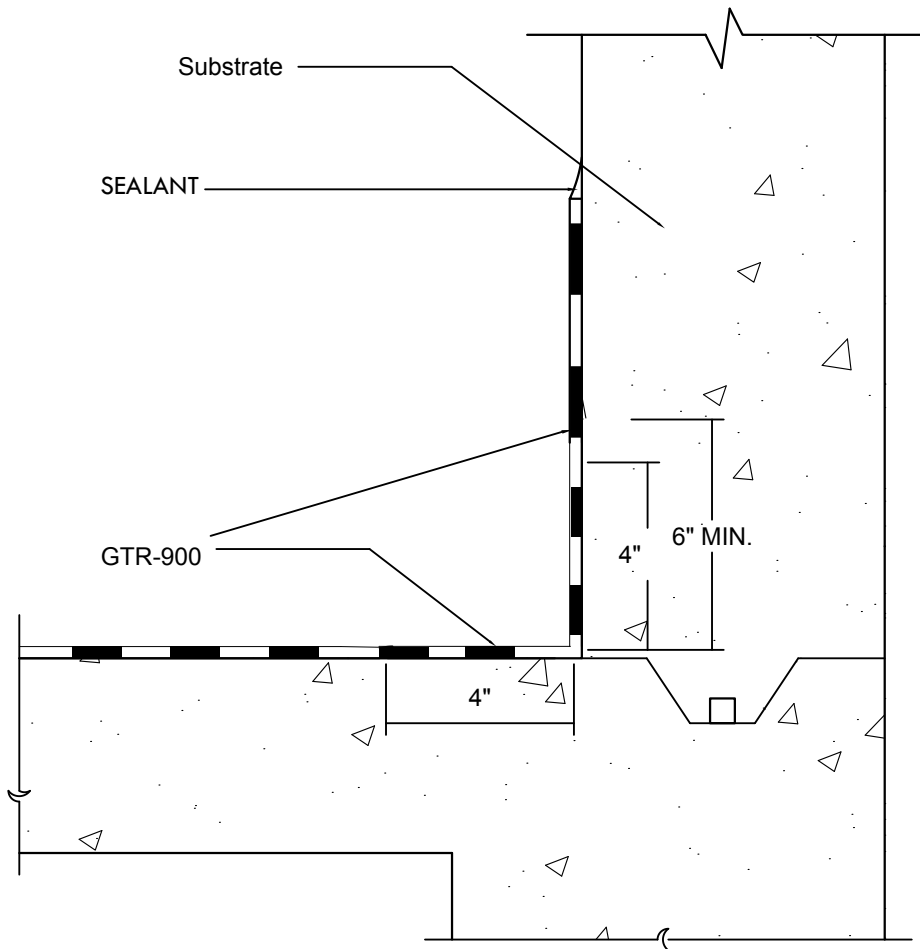


1136 114th LN NW #400
 MINNEAPOLIS, MN 55448
 OFFICE: 612. 872. 1900
 www.re-systemsgroup.com

DETAIL AT POOLS, FOUNTAINS AND STEPS

GTR-900
Water Performance

DATE:	12.28.2023
SCALE:	NTS
DRAWING NO.:	GTR900-BG 05

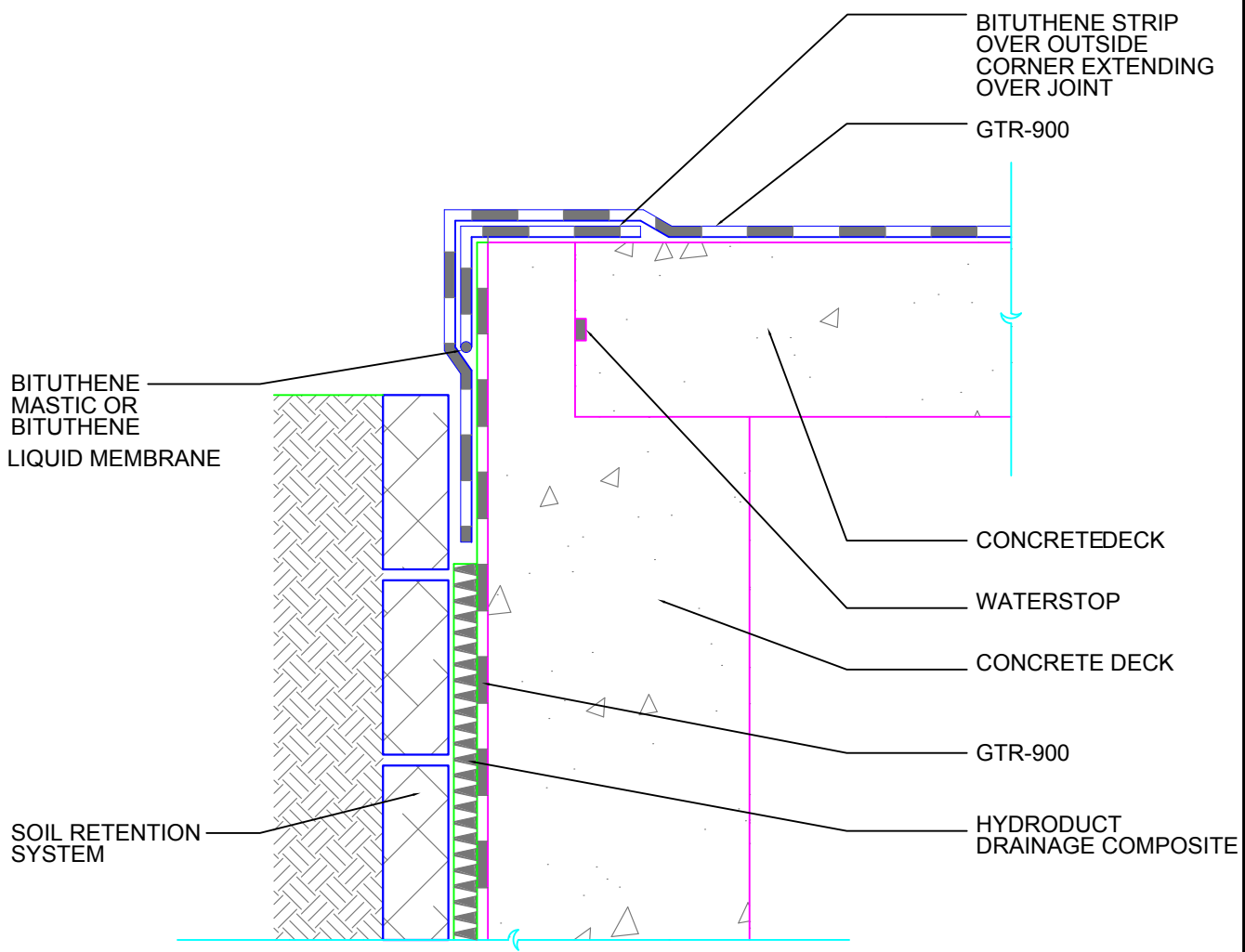


1136 114TH LN NW #400
 MINNEAPOLIS, MN 55448
 OFFICE 612.872.1900
 www.re-systemsgroup.com

TYPICAL PLAZA HORIZONTAL TO
 VERTICAL TERMINATION

GTR-900
RAPID PERFORMANCE

DATE:	12.28.23
SCALE:	NTS
DRAWING NO.:	GTR900-PZ 05



BITUTHENE
MASTIC OR
BITUTHENE
LIQUID MEMBRANE

SOIL RETENTION
SYSTEM

BITUTHENE STRIP
OVER OUTSIDE
CORNER EXTENDING
OVER JOINT

GTR-900

CONCRETE DECK

WATERSTOP

CONCRETE DECK

GTR-900

HYDRODUCT
DRAINAGE COMPOSITE



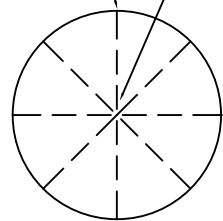
1136 114TH LN NW #400
MINNEAPOLIS, MN 55448
OFFICE: 612. 872. 1900
www.re-systemsgroup.com

TIE INTO PLAZA DECK WATERPROOFING

GTR-900
RAPID PERFORMANCE

DATE :	12.28.2023
SCALE :	NTS
DRAWING NO. :	GTR-900-BG 05

PENETRATION PROFILE



GTR-900 RELIEF CUTS

PIPE PENETRATION

GTR-900

CANT

GTR-900

APPROVED WATERSTOP BY OTHERS

GTR-900

MUD SLAB

BACKER ROD WITH SEALANT

ASSEMBLY

FINISHED

NOTES: ALL PENETRATIONS TO BE GROUTED. A MINIMUM OF 6 INCHES IS REQUIRED BETWEEN PENETRATIONS TO ENSURE PROPER DETAILING. AVOID PLACEMENT OF MULTIPLE PENETRATIONS.



RE-SYSTEMS GROUP AMERICAS

1136 114TH LANE NW #400
MINNEAPOLIS MN 55448

OFFICE: 612. 872. 1900

www.re-systemsgroup.com

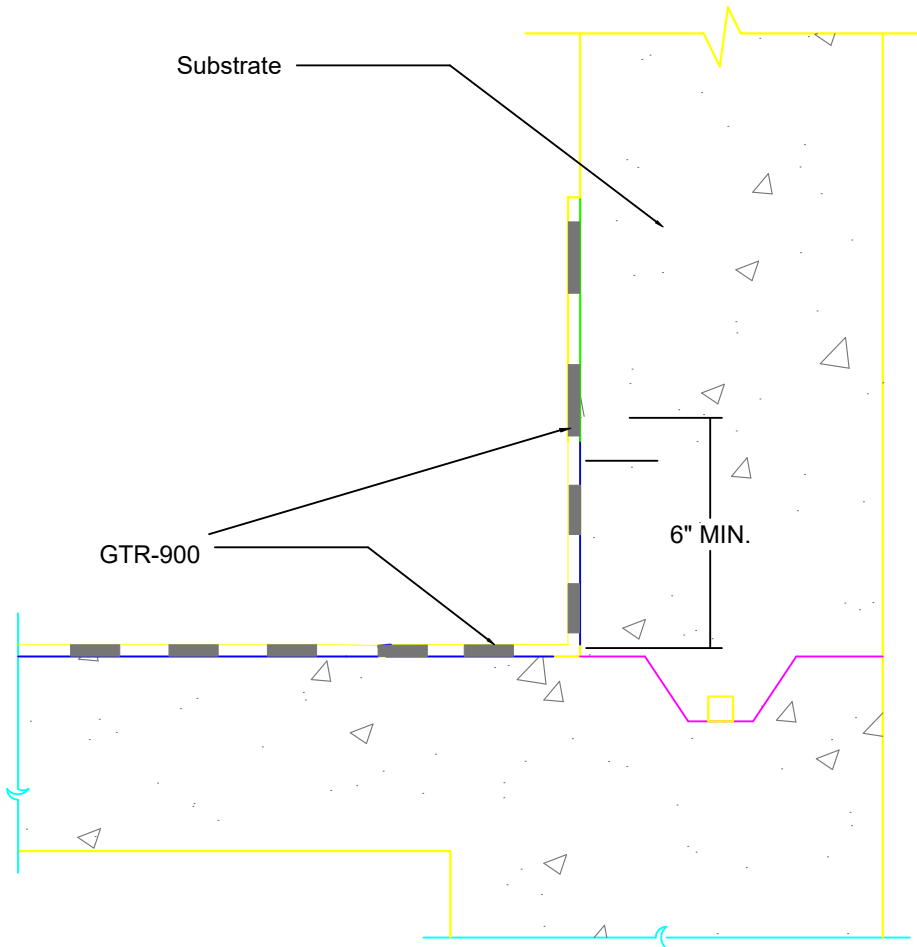
TYPICAL PIPE PENETRATION

GTR-900
RAPID PERFORMANCE

DATE: 12.28.2023

SCALE: NTS

DRAWING NO.: GTR750-BG 06



1136 114TH LN NW #400
 MINNEAPOLIS, MN 55448
 OFFICE: 612. 872. 1900
 www.re-systemsgroup.com

TYPICAL PLAZA HORIZONTAL TO
 VERTICAL TERMINATION

GTR-900
RAPID PERFORMANCE

DATE:	12.28.2023
SCALE:	NTS
DRAWING NO.:	GTR750-PZ 05